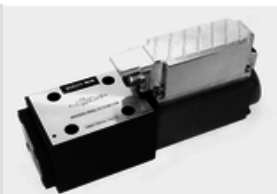




4WRPEH10...type Servo Valve



4WRPEH10...2XJ...type

Size 10

Max. Working Pressure: 315 bar

Max. Flow: 100 L/min

Contents

Function and configuration	02
Ordering code	03
Symbols	03
Technical data	04
Electrical connection	05
Technical data for the cable	05
Integrated electronics	06-07
Characteristic curves	08-09
Unit dimensions	10

Features

- Directly actuated controlled directional valve, with control spool and sleeve in servo quality
- Single-side operated, 4/4 fail-safe position in deactivated state
- Electric position feedback and integrated electronics (OBE), calibrated in the factory
- Electric port 6P+PE Signal input of differential amplifier with interface A1: ± 10 V or interface F1: 4...20mA (Rsh=200 Ω)
- Subplate mounting, porting pattern to ISO 4401-05-04

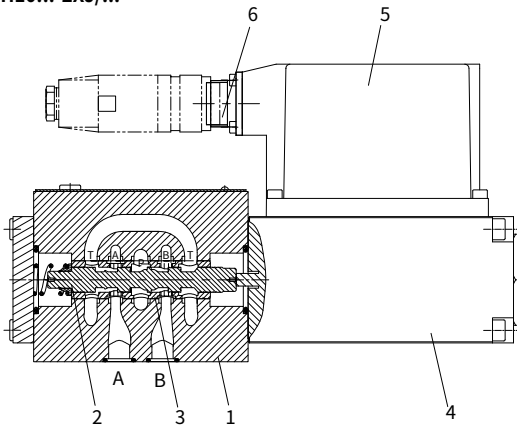
Function and configuration

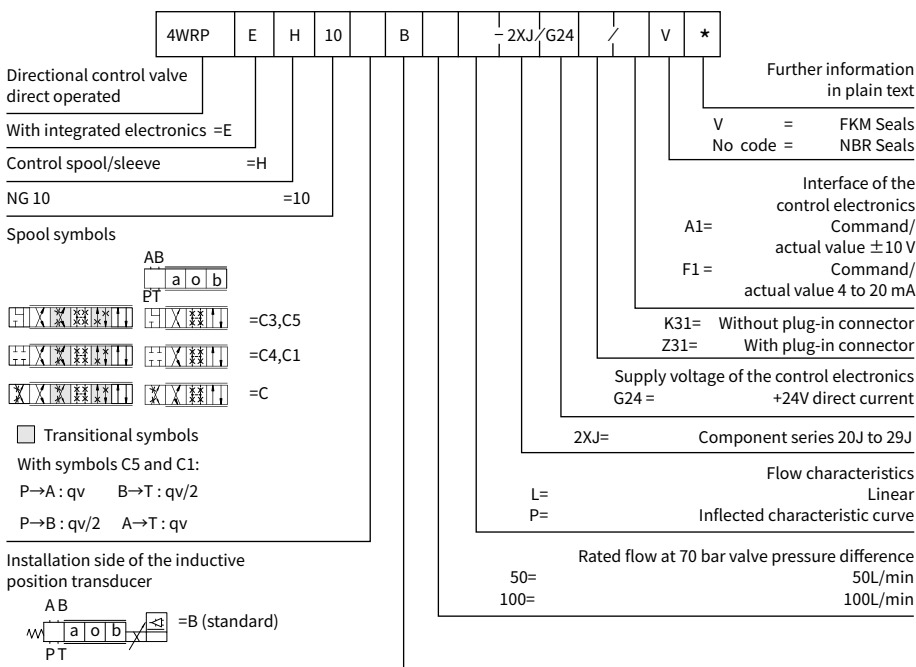
4WRPEH type high-response valve is a pilot-operated directional control valve with electrical position feedback and integrated electronics (OBE). The valve consists of the housing (1), spool (2), sleeve (3), control solenoid with position transducer (4) and so on.

The specified command value is compared with the actual position value in the integrated electronics (OBE). In the event of a control deviation, the stroke solenoid is activated, which adjusts the control spool against the spring due to the change in the magnetic force.

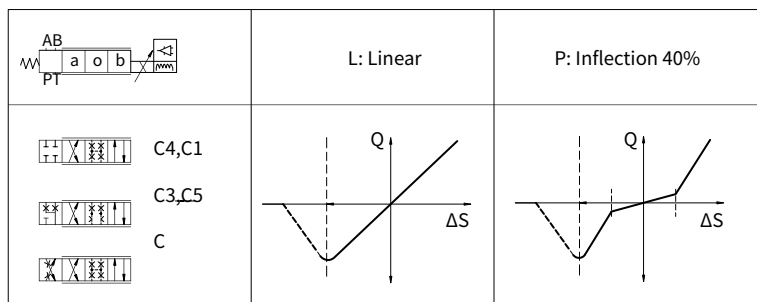
Lifting/control cross-section is proportionally regulated to the command value. In case of a command value presetting of 0 V, the electronics adjusts the control spool against the spring to central position. In deactivated condition, the spring is untensioned to a maximum and the valve is in fail-safe position. With the electronics switched off, the valve moves immediately into the relevant safe basic position (fail-safe). The switch position P-B/A-T is passed through during this process, which can result in movements on the controlled component. It must be taken into account in system designs.

Type 4WRPEH10...-2XJ/...



Ordering code

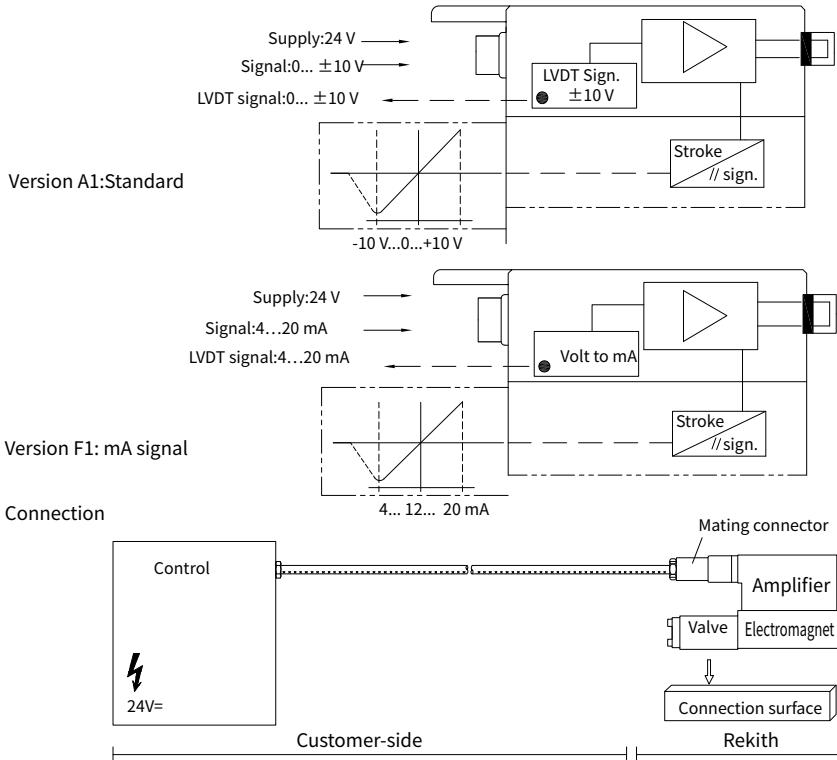
Symbols



Technical data

General				
Design		Spool valve, directly operated, with steel sleeve		
Actuation		Proportional solenoid with position control, OBE		
Connection type		Plate port, porting pattern (ISO 4401-05-04-0-05)		
Installation position		Any		
Ambient temperature range		°C	-20...+50	
Weight		Kg	7.1	
Maximum vibration resistance (test condition)		Max. 25 g, space vibration test in all directions (24h)		
Hydraulic (measured with HLP 46, $\vartheta_{oil}=40^{\circ}\text{C} \pm 5^{\circ}\text{C}$)				
Hydraulic fluid		Hydraulic oil according to DIN 51524...535		
Viscosity range	Recommended	mm ² /s	20...100	
	Max. admissible	mm ² /s	10...800	
Hydraulic fluid temperature range		°C	-20 to +70	
Max. admissible degree of contamination of the hydraulic fluid, cleanliness class according to ISO 4406 (c)		Class 18/16/13		
Rated flow ($\Delta p = 35$ bar per edge)		L/min	50	100
Maximum operating pressure		bar	Port P, A, B: 315	
Maximum operating pressure		bar	Port T: 250	
Leakage flow at 100 bar	Linear	cm ³ /min	<1200	<1500
	Nonlinear	cm ³ /min	<600	<600
Static/Dynamic				
Hysteresis		%	≤ 0.2	
Actuating time for signal step 0 ... 100%		ms	25	
Temperature drift		Zero shift < 1% at $\Delta T=40^{\circ}\text{C}$		
Zero compensation		Ex factory $\pm 1\%$		
Electric, control electronics integrated in the valve				
Relative duty cycle		%	100ED	
Protection class		IP 65 (with mating connector mounted and locked)		
Connection		Mating connector 6P+PE, DIN 43563		
Supply voltage		24VDC _{nom}		
Terminal A		min. 21VDC / max. 40VDC		
Terminal B: 0V		Ripple max. 2 VDC		
Fuse protection, external		A _F	2.5	
Input, version "A1"		Differential amplifier, R _i = 100 kΩ		
Terminal D (U _E)		0...±10V		
Terminal E		0V		
Input, version "F1"		Load, R _{sh} = 200 Ω		
Terminal D (I _{D-E})		4...12...20mA		
Terminal E (I _{D-E})		Current loop I _{D-E} return		
Test signal, version "A1"		LVDT		
Terminal F (U _{Test})		0...±10V		
Terminal C		Reference 0 V		
Test signal, version "F1"		LVDT		
Terminal F (I _{F-C})		4...20 mA output		
Terminal C (I _{F-C})		Current loop I _{F-C} feedback		

Electrical connection



Technical data for the cable

- Version:**
- Multi-core wire
 - Litz wire structure, extra fine wire according to VDE 0295, class 6
 - Protective earthing conductor, green-yellow
 - Cu shielding braid
- Number of wires:** - Determined by the valve type, connector type and signal configuration
- Line Ø:**
- 0.75 mm² to 20 m of length
 - 1.0 mm² to 40 m of length Outer Ø: - 9.4...11.8 mm
 - 12.7...13.5 mm

Note:

Supply voltage 24 V DC_{nom}

if the value falls below 18V DC= an internal fast switch-off is effected which can be compared with "Release OFF".

Additionally for version F1:

$I_{D-E} \geq 3\text{mA}$ - valve is active

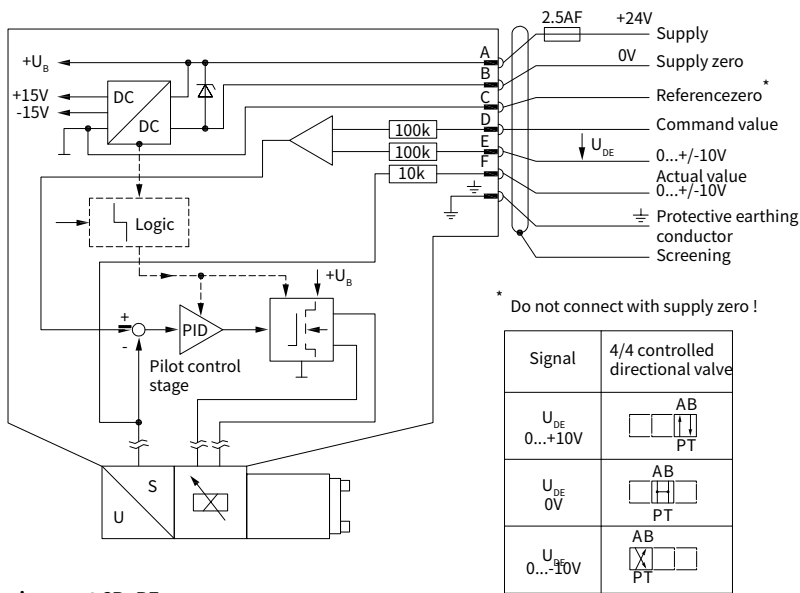
$I_{D-E} \leq 2\text{mA}$ - valve is deactivated.

Electric signals taken out via control electronics may not be used for the switch-off of safety-relevant machine functions!

Integrated electronics

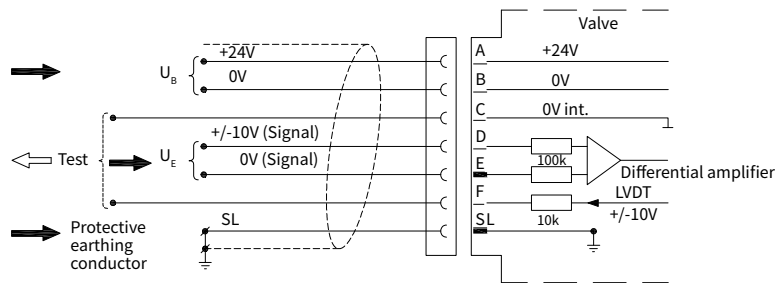
Block diagram/pin assignment

Version A1: $U_{D-E} \text{ } 0... \pm 10V$



Pin assignment 6P+PE

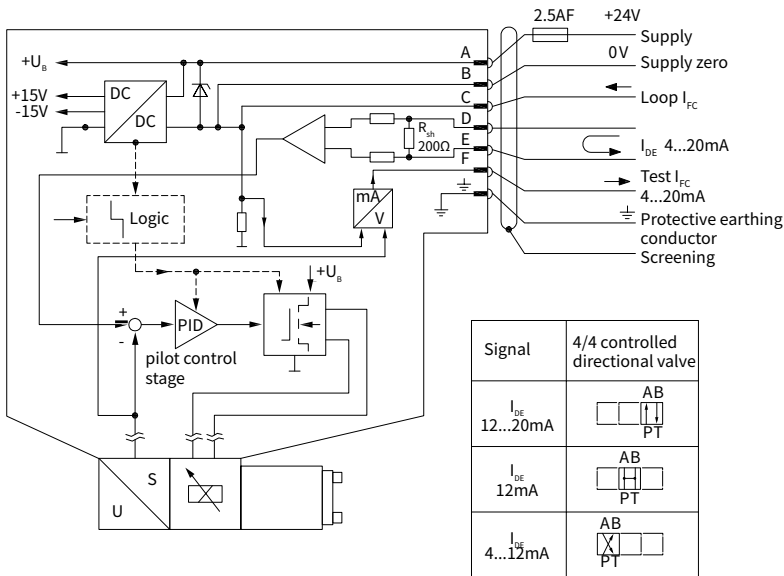
Version A1: $U_{D-E} \text{ } 0... \pm 10V$



Integrated electronics

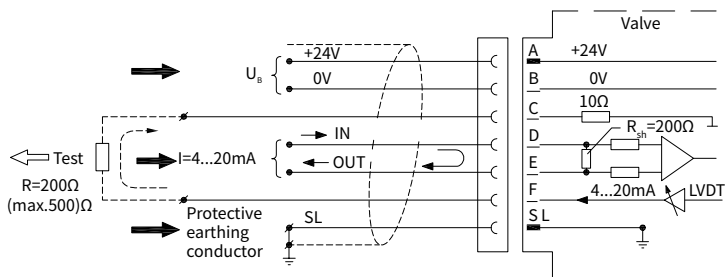
Block diagram/Pinout

Version F1: I_{D-E} 4...20mA



Pin assignment 6P+PE

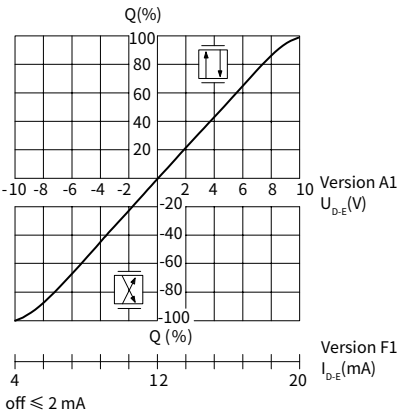
Version F1: I_{D-E} 4...20mA



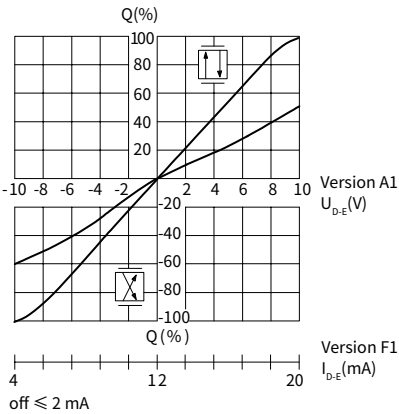
Characteristic curves (measured with HLP46, $\theta_{oil}=40^{\circ}\text{C} \pm 5^{\circ}\text{C}$)

Flow-signal function $Q=f(U_{D-E}), Q=f(I_{D-E})$

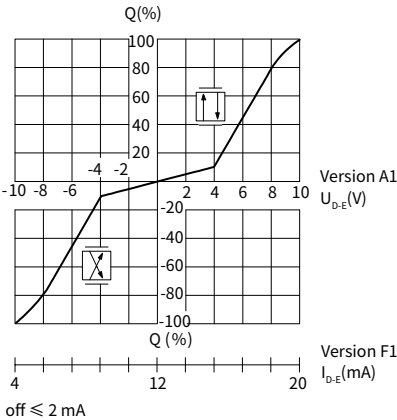
Linear characteristic curve (version "L"), 1 : 1



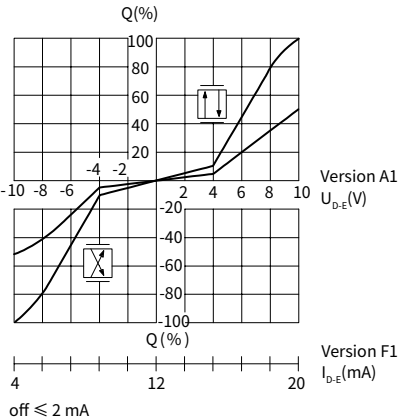
Linear characteristic curve (version "L"), 2 : 1



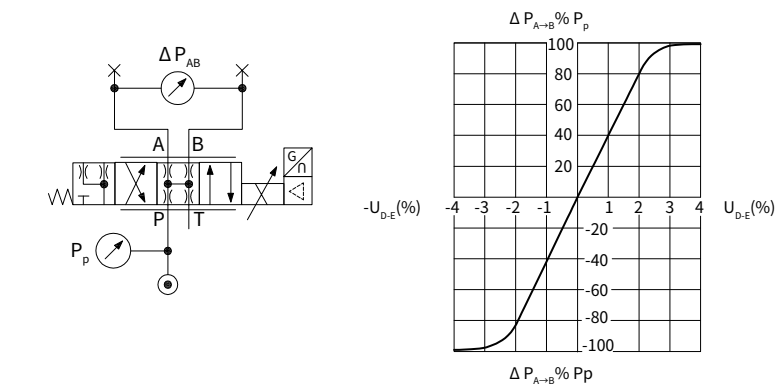
**Inflected characteristic curve "P",
inflection at 40% , 1 : 1**



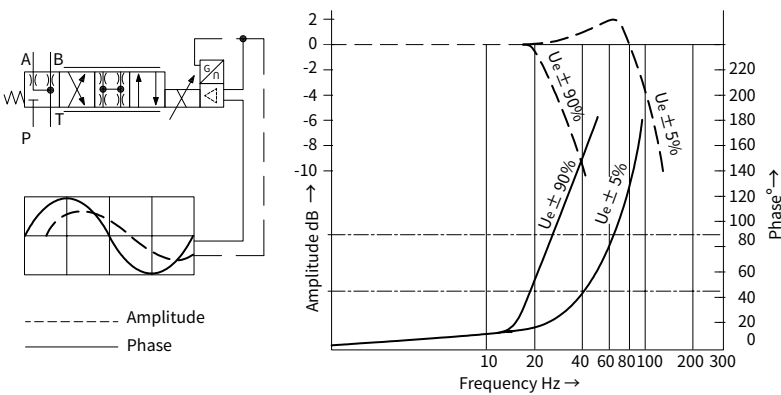
**Inflected characteristic curve "P",
inflection at 40% , 2 : 1**



Characteristic curves: Pressure amplification (measured with HLP46, $\vartheta_{oil}=40^{\circ}\text{C} \pm 5^{\circ}\text{C}$)

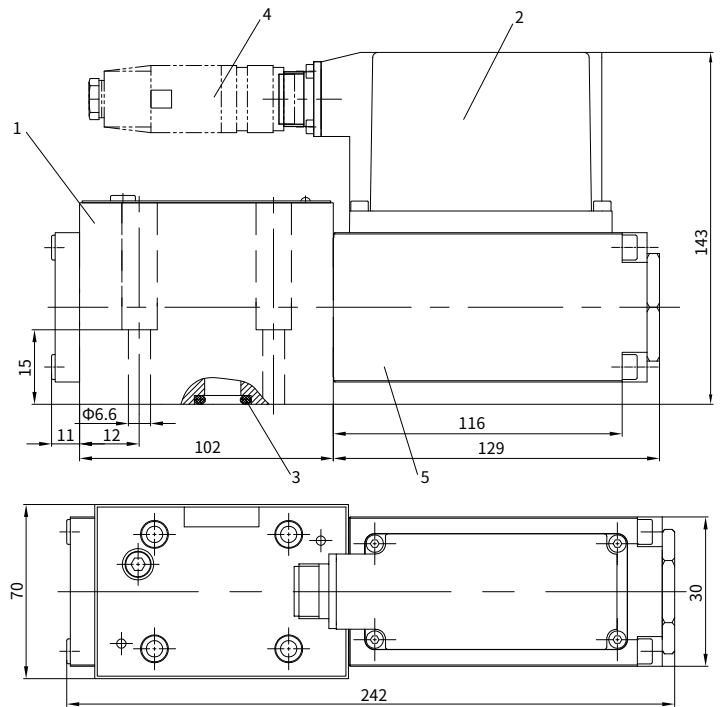


Characteristic curves: Bode diagram



Unit dimensions

(nominal dimensions in mm)



- 1 Valve housing
- 2 Integrated electronics
- 3 Identical seal rings for ports A, B, P and T (O-ring 12×2)
- 4 Plug-in connector
- 5 Proportional solenoid with inductive position transducer

